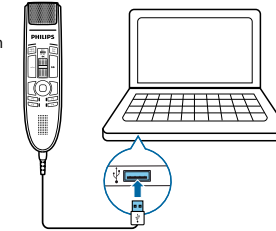


Customize your modes

- Modi anpassen
- Personalice sus modos
- Personalizzare le modalità
- Anpassa lägen
- Pas uw modi aan

1 Connect

- Anschließen
- Connecter
- Conectar
- Collegare
- Aansluiten
- Anslut



2 Software

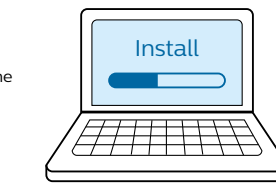
- Software
- Logiciel
- Software
- Software
- Software
- Programvara



Philips SpeechControl software
www.dictation.philips.com/speechcontrol


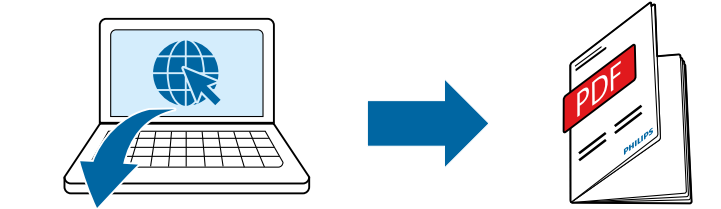
3 Install

- Installation
- Installation
- Instalación
- Installazione
- Installatie
- Installation



4 Configure

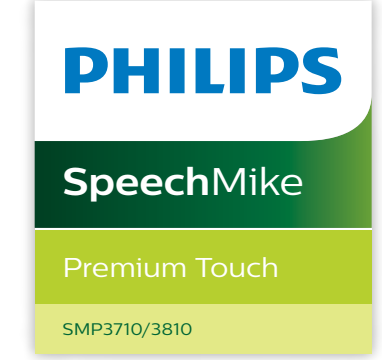
- Konfiguration
- Configuration
- Configuración
- Configurazione
- Configuratie
- Konfiguration

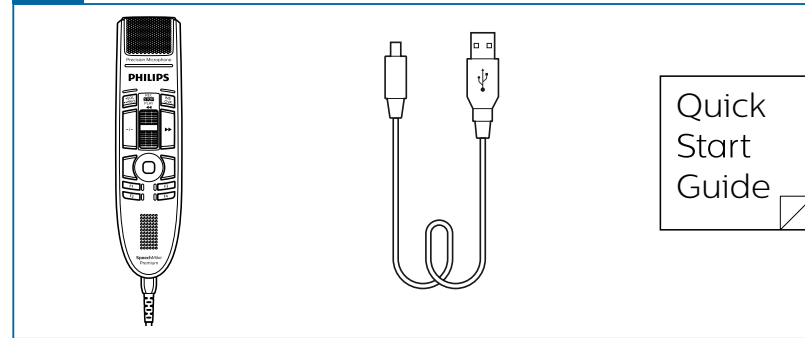
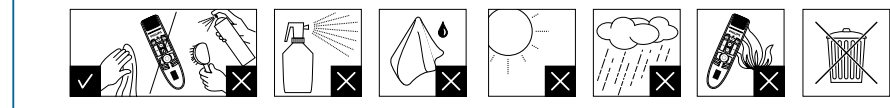
www.speechmike.com/premium-touch/support



© 2020 Speech Processing Solutions GmbH. All rights reserved.
 Specifications are subject to change without notice. Philips and the Philips shield emblem are registered trademarks of Koninklijke Philips N.V. and are used under license.
 Document version 4.0, 29/05/2020, 7737 103 2010.4



- EN** Quick start guide
- DE** Kurzanleitung
- FR** Guide de démarrage rapide
- ES** Guía de inicio rápido
- IT** Guida rapida di introduzione
- NL** Snelle startgids
- SV** Snabbstartsguide

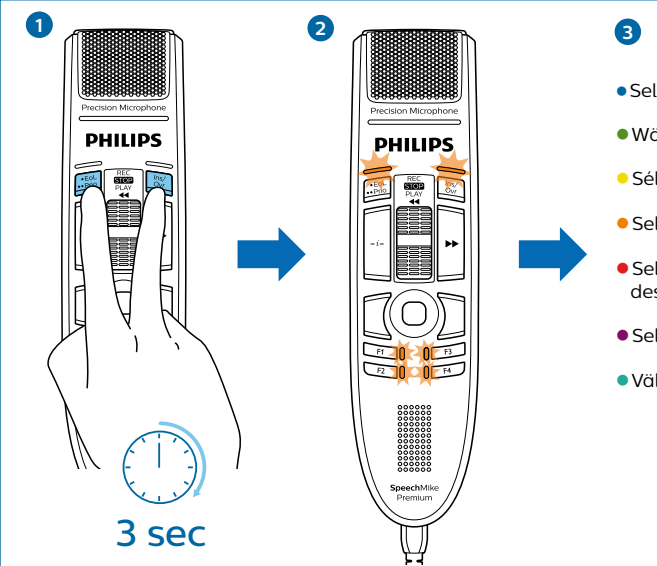




For product information and support, visit
www.speechmike.com/premium-touch/support

Select your button mode

- Tastenmodus auswählen
- Seleccione su modo de botones
- Selecteer uw toetsenmodus

- Sélectionnez votre mode des boutons
- Selezionare una modalità pulsante
- Välj ett knappläge



- Select your mode
- Wählen Sie Ihren Modus
- Sélectionnez votre mode
- Seleccione su modo
- Selezionare la modalità desiderata
- Selecteer uw modus
- Välj ett läge

F1	<ul style="list-style-type: none"> ● Event mode (default) ● Befehlsmodus (Standardeinstellung) ● Mode de commande (par défaut) ● Modo comando (predeterminado) ● Modalità comando (predefinita) ● Opdrachtmodus (standaard) ● Åtgärdsläge (standard)
F2	<ul style="list-style-type: none"> ● Keyboard mode ● Mode clavier ● Modalità tastiera ● Tangentbordsläge ● Tastaturmodus ● Modo teclado ● Toetsenbordmodus
F3	<ul style="list-style-type: none"> ● Browser mode ● Mode navigateur ● Modalità browser ● Webbläsarläge ● Browsermodus ● Modo navegador ● Browsermodus
F4	<ul style="list-style-type: none"> ● Windows speech recognition mode ● Windows Spracherkennungsmodus ● Mode de reconnaissance vocale Windows ● Modo reconocimiento de voz Windows ● Modalità riconoscimento vocale Windows ● Windows-spraakherkenningsmodus ● Läget Windows taligenkänning ● Dragon-Modus für Mac ● Modo Dragon para Mac ● Dragon-modus voor Mac
EoL	<ul style="list-style-type: none"> ● Dragon for Mac mode ● Mode Dragon pour Mac ● Modalità Dragon per Mac ● Dragon-läge för Mac ● Dragon-Modus für Mac ● Modo Dragon para Mac ● Dragon-modus voor Mac
Ins/Ovr	<ul style="list-style-type: none"> ● Dragon for Windows mode ● Mode Dragon pour Windows ● Modalità Dragon per Windows ● Läget Dragon för Windows ● Dragon-Modus für Windows ● Modo Dragon para Windows ● Dragon-modus voor Windows



● Find more information on all button modes here:
www.speechmike.com/premium-touch/support

● Weitere Informationen zu allen Tastenmodi finden Sie hier:
www.speechmike.com/premium-touch/support

● De plus amples informations sur les modes des boutons sont disponibles ici : www.speechmike.com/premium-touch/support

● Encuentre más información acerca de todos los modos de botones aquí:
www.speechmike.com/premium-touch/support

● Ulteriori informazioni su tutte le modalità pulsante sono disponibili qui: www.speechmike.com/premium-touch/support

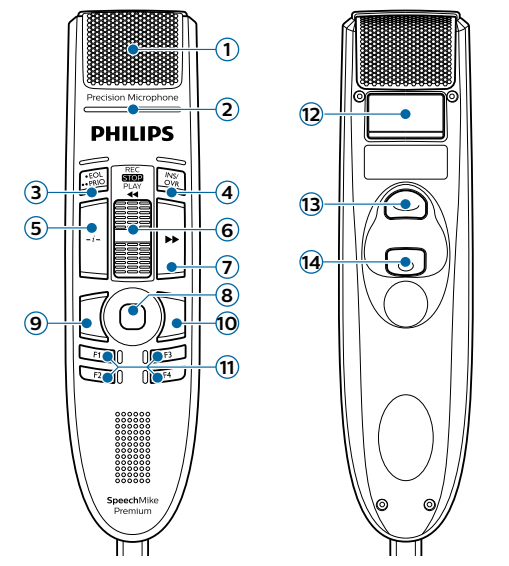
● Hier vindt u meer informatie over alle toetsenmodi: www.speechmike.com/premium-touch/support

● För mer information om alla knapplägen: www.speechmike.com/premium-touch/support

Overview (Event mode)

- Übersicht (Befehlsmodus)
- Descripción general (Modo comando)
- Overzicht (Opdrachtmodus)

- Présentation (Mode de commande)
- Panoramica (Modalità comando)
- Översikt (Åtgärdsläge)



- Microphone
- Record indicator light
- End-of-letter (EOL), priority
- Insert/overwrite
- Instruction
- Slide switch (record, stop, play, rewind)
- Fast-forward
- Touch navigation/left mouse button
- Left mouse button
- Right mouse button
- Microphone
- Mikrofon
- Microfono
- Mikrofoon
- Aufnahme-Kontrollleuchte
- Voyant d'enregistrement
- Indicateur lumineux de registration
- Control lampje opname
- Indikatorlampe inspelning
- Briefende (EOL), Priorität
- Fin de lettre (EOL), priorité
- Fin-de-carta (EOL), prioridad
- Fine-lettera (EOL), priorità
- Einde-brief (EOL), prioriteit
- End-of-letter (EOL), prioritet
- Einfügen/Überschreiben
- Insérer/écraser
- Inserir/sobrescribir
- Inserimento/Sovraregistrazione
- Invoegen/overschrijven
- Läggt till/Skriv över
- Anweisung
- Instruction
- Instrucción
- Istruzioni
- Instructie
- Instruktion

- Schiebeschalter (Aufnahme, Stopp, Wiedergabe, Rücklauf)
- Interrupteur à curseur (enregistrement, arrêt, lecture, retour)
- Interruptor deslizante (grabar, detener, reproducir, rebobinado)
- Selettore (registrazione, stop, riproduzione, riavvolgimento)
- Schuifschakelaar (opname, stop, afspelen, terug)
- Skjutreglage (spela in, stopp, spela upp, spola tillbaka)
- Schneller Vorlauf
- Avance rapide
- Avanti veloce
- Snel vooruit
- Linke Maustaste
- Botón izquierdo del ratón
- Linke Maustaste
- Botón izquierdo del ratón
- Rechte Maustaste
- Botón derecho del ratón
- Rechter muisknop
- Programmierbare Funktionstasten
- Touches de fonction programmables
- Botones con función programable
- Pulsanti funzione programmabili

- Programmierbare funktietoetsen
- Programmerbara funktionsknappar
- Bar code scanner (SMP3810)
- Barcodeleser (SMP3810)
- Scanner de code-barres (SMP3810)
- Escáner de código de barras (SMP3810)
- Lettore codici a barre (SMP3810)
- Barcode scanner (SMP3810)
- Streckkodsläsare (SMP3810)
- Command button (SMP3710)
- Befehlstaste (SMP3710)
- Bouton de commande (SMP3710)
- Botón de comando (SMP3710)
- Pulsante di comando (SMP3710)
- Commandknop (SMP3710)
- Vänster musknapp (SMP3710)
- Scan button (SMP3810)
- Scantaste (SMP3810)
- Bouton de scan (SMP3810)
- Botón escanear (SMP3810)
- Pulsante di scansione (SMP3810)
- Scanknop (SMP3810)
- Skanningsknapp (SMP3810)
- Left mouse button
- Linke Maustaste
- Bouton gauche de souris
- Botón izquierdo del ratón
- Pulsante sinistro del mouse
- Linker muisknop
- Vänster musknapp